

# PRODUCT SPECIFICATIONS

**Publication Date:**

October, 2019

**Description:**

Mitsubishi Triton MR SpartanBar

**Application:**

Mitsubishi Triton MR 11/18+

**Fitting:**

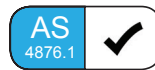
Minimum 4 Hours (Non Winch)

Minimum 5 Hours (Winch)

Refer Matrix for Accessory Fitup

**Available:**

Now



## Product Specification

The new styling of Mitsubishi's recently released Triton MR offers many new design features over the previous release. SmartBar's SpartanBar has been designed to complement the vehicle styling, while maintaining all of the factory accessories and all the while providing unparalleled safety.

The SpartanBar's Vehicle Frontal Protection System (VFPS) is a partial bumper replacement and is designed to suit all model variants (GLX, GLX ADAS, GLX+, GLS and GLS Premium).

The SpartanBar is engineered to be the lightest and safest VFPS available; offering even more protection and safety for vehicle owners and importantly pedestrians.

Compatible with all safety features including; front parking sensors, Forward Collision Mitigation (FCM), Lane Departure Warning (LDW), Ultrasonic Misacceleration Mitigation System (UMS) and Multi Around Monitor (MAM) which includes a front camera.

## Protection & Styling Characteristics:

- Meets full Australian Standard AS 4876.1-2002. Including 3.2 Road User Protection
- Weight savings provide improved fuel economy and reduced tyre, suspension and brake wear when compared to other alternatives
- Fitted Weight of **30kg for Non Winch**
- Fitted Weight of **43kg for Winch**
- Bar adds 194mm to vehicle length
- 25° approach angle at centre
- Air Bag Compatible
- Bumper trim, easily fitted
- AHC Structure (Absorbing Hollow Core) provides superior frontal protection.
- Accepts original fog/DRL lights for GLX models (GLX, GLX ADAS & GLX+).
- Aftermarket fog light kit required for GLS models (GLS & GLS Premium). See matrix.
- Supplied with 1x antenna mount
- Underwing protection
- Antenna bracket mount location on the bar, up to 4 available
- UV stabilised polymer for durability and corrosion resistance
- Styled to maintain the vehicle's aesthetic
- Proudly designed and manufactured in Australia
- Minimal maintenance
- Minimal repair costs after impact
- Manufactured from environmentally friendly, recyclable polyethylene polymer
- Available in black as standard, other colours available for large order quantities
- Accommodates up to 10,000lb winch
- Accommodates a large range of spotlights
- Compatible with ARB under vehicle protection (UVP)
- Optional recovery point (right hand side only) available for winch kit only.
- Compatible with front parking sensors
- Compatible with front parking camera (part of the Multi Around Monitor). Camera relocation kit required
- Compatible with Forward Collision Mitigation (FCM)<sup>1</sup>, Lane Departure Warning (LDW)<sup>1</sup>, Ultrasonic Misacceleration Mitigation System (UMS)<sup>1</sup>, Multi Around Monitor (MAM)<sup>1</sup>, front parking sensors and front camera
- SmartBar is tested to ensure a HIC (Head Injury Criteria) figure below the Australian Standard rating of 1500, as to provide pedestrians with a higher probability of surviving a low speed impact

<sup>1</sup> Please ensure that customers are aware that driver assistance features are supplemental and do not replace the driver's judgement. Full safety feature functions may not operate in some driving conditions and road conditions or adverse weather. Please refer to vehicle owners manual for full details on safety system functionality.

## Accessories Mount:

The SpartanBar is supplied with an accessory bracket to mount driving lights, light bars, winch control boxes and other accessories.

For further details on light fitment see page 9.



## Winch Mount:

The SpartanBar winch bracket kit is compatible with winches up to 10,000lb.

See page 8 for full winch details.

A flip up number plate bracket is recommended for standard size number plates with winch bars. ARB part number 3500630.



## Under Vehicle Protection:

The SpartanBar in both winch and non winch configurations, is compatible with the ARB under vehicle protection (UVP) as shown.

## Windscreen Washer Bottle:

A replacement windscreen washer bottle is supplied with the SpartanBar to improve the approach angle at the wheel centres of the vehicle to improve offroad capabilities.



## Parking Sensors:

Vehicles fitted with parking sensors have the parking sensors relocated to the bar.

When parking sensors are to be fitted the specific bars below are required.

Part Number: SA239BL237 Standard

Part Number: SA239BL238 Winch



## Camera Relocation:

Vehicles fitted with Multi Around Monitor (GLS Premium variant) include a front camera in the grille. The camera is relocated with the camera relocation kit.

For standard SpartanBars, the camera is relocated centrally. For winch install SpartanBars, the camera is relocated off centre (pictured).

Part Number: SA237CRK



## Recovery Point:

Optional recovery points (right hand side only) to assist with vehicle recovery. Available for winch kit only. Rated to 8000kg.

The SpartanBar is not compatible with the ARB recovery points.

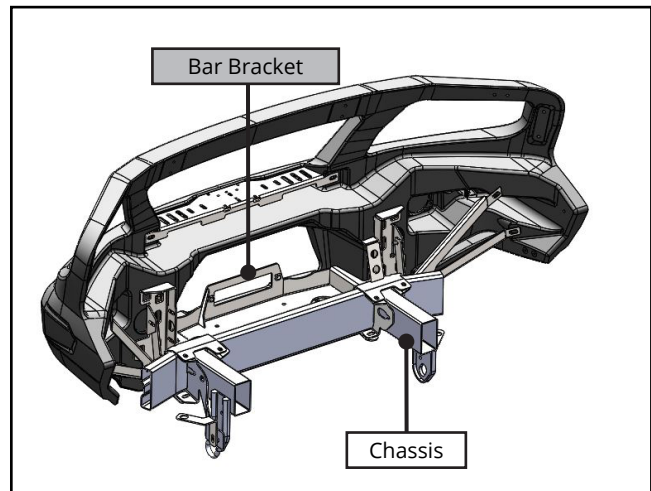
Part Number: SA238RPR



## Chassis Mounts:

The chassis mount design allows for three axis adjustability while supporting the chassis and providing superior rigidity to the bar.

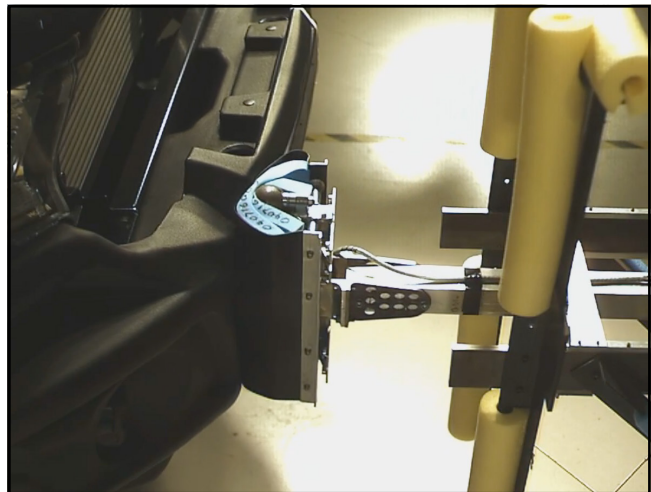
All brackets have been tested and comply with Vehicle Air Bag compatibility, Winch Maximum Pull Exertion and Australian Safety Standards.



## Pedestrian Safety:

SmartBar's have been tested and proven to be less likely to cause serious injury to pedestrians than other alternatives. This is due to the hollow construction along with the unique and specifically designed co-polymer material which allows the bar to absorb most of the impact.

This SpartanBar is tested to ensure a HIC (Head Injury Criteria) figure below the Australian Standard rating of 1500.



## Underwing Panels:

The under wings are designed to provide even more protection to the under body of the Mitsubishi Triton outside of the chassis rails.

The under wing panels are compatible with the ARB UVP.



## Fog / DRL Lights:

The original Triton fog/DRL lights are compatible with the SpartanBar; with the exception of GLS variants (GLS & GLS Premium).

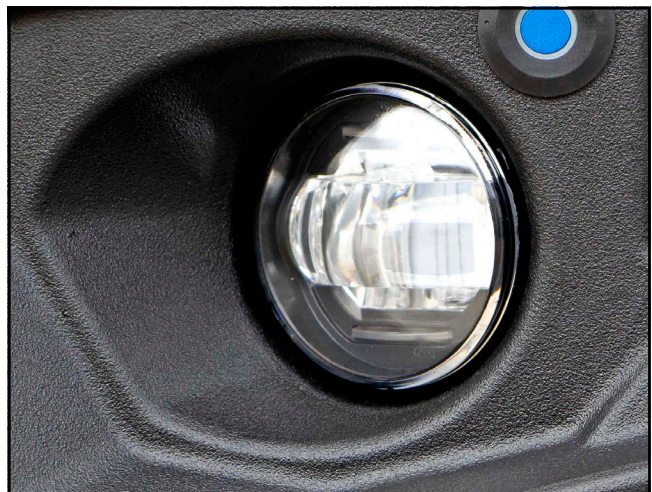
For GLS variants, the aftermarket fog light kit below is required.



## Aftermarket Fog Light Kit:

For GLS variants (GLS & GLS Premium), the aftermarket fog light kit is required.

Part Number: BP80557




## Parker / Indicator Lights:

The SpartanBar is supplied with LED parker / indicator lights.



## Inner Antenna Mounts:

The antenna bracket mount locations are incorporated into the top loops of the SpartanBar. The SpartanBar is supplied with a single antenna mount kit (SAAMB12) which mounts to the inner mounting position. This can be mounted either RHS or LHS. A second bracket can be purchased if required.

 Large antennas are not recommended for fitment to the drivers side antenna mount.

Part number: SAAMB12



## Antenna Outer Mounts:

An additional antenna mount kit can be purchased for mounting to the outer mounting position. This can be mounted either RHS or LHS.

 Large antennas are not recommended for fitment to the drivers side antenna mount.

Part number: TP44799



## All Variant Compatibility

The SpartanBar is compatible with all models of the MR Triton, including the GLX (pictured), GLX+, GLX ADAS, GLS & GLS Premium.

See product matrix for further details.



## Winch Model Fitment:

This winch compatible SpartanBar accommodates the following winches:

Warn ZEON 8, 8-S, 10, 10-S  
 Warn ZEON Platinum 10 and 10-S  
 Warn Magnum 10lb  
 Warn M8000<sup>1</sup>, XD9000<sup>1</sup>, XP9.5<sup>1</sup> and XDC 9.5<sup>1</sup>  
 Bushranger DV-9TH<sup>1</sup>, DS9.5TH<sup>1</sup> and Seal 9.5TH<sup>1</sup>  
 Bushranger Revo 10lb<sup>1</sup>  
 Smittybilt X20 10lb

The SpartanBar is supplied with an accessory bracket that mounts to the bar in front of the grille. The winch control box can be mounted on the accessory bracket between the spotlights in the mounting holes provided.

Please note that not all winches on the market will have corresponding control box mount holes pre-drilled.

Note: If a control box is fitted to the accessory bracket, it will completely prevent the use of a light bar.

<sup>1</sup> The control box must to be removed from the winch and mounted to the accessory bracket. This will completely prevent the use of a light bar.





## Light Model Fitment:

This model of SmartBar accommodates the following Lights:

### ARB Intensity:

- ARB Intensity 21
- ARB Intensity 32
- ARB Intensity AR40<sup>1,2</sup>

### Bushranger Night Hawk lights:

- VLI Series light bars<sup>1,3</sup>
- VLI Series driving lights
- NHP180 (S&D) (180mm Round light)
- NHS055-NHS245<sup>1,3</sup>

### IPF Lights:

- 801/901 Xtreme Sport Series
- 800/900 HID Series
- 800/900 Series
- 900 Xtreme LED Sport Series
- 868/968 Series
- 930 Super Rally

<sup>1</sup>If a control box is fitted to the accessory bracket, it will completely prevent the use of a light bar. See previous page for a list of winches that require the control box to be fitted to the accessory bracket.

<sup>2</sup>Requires a pedestal mounting kit

<sup>3</sup>Light bars up to 24.5 inch



# PART NUMBER MATRIX



## SPARTANBAR MITSUBISHI TRITON MR 11/18+

Fitting Time	4 Hours <sup>1</sup>	5 Hours <sup>1</sup>	30 mins	30 Mins	15 mins	15 mins	15 mins	30 mins
<b>Mitsubishi Triton Non Winch</b>								
<b>Model (Guide Only)</b>								
No Front Parking Sensors & No Front Camera	GLX, GLX+ & GLX ADAS	SA237BL237			SAAMB12	TP44799	TP44799	
With Front Parking Sensors <sup>1</sup>	GLS	SA239BL237	BP80557		SAAMB12	TP44799	TP44799	
With Front Parking Sensors & Front Camera <sup>1</sup>	GLS Premium	SA239BL237	BP80557	SA237CRK	SAAMB12	TP44799	TP44799	
<b>Fitting Time</b>								
<b>Mitsubishi Triton Winch</b>								
<b>Model (Guide Only)</b>								
No Front Parking Sensors & No Front Camera	GLX, GLX+ & GLX ADAS	SA237BL238			SAAMB12	TP44799	TP44799	SA238RPR
With Front Parking Sensors <sup>1</sup>	GLS	SA239BL238	BP80557		SAAMB12	TP44799	TP44799	SA238RPR
With Front Parking Sensors & Front Camera <sup>1</sup>	GLS Premium	SA239BL238	BP80557	SA237CRK	SAAMB12	TP44799	TP44799	SA238RPR

Please note:

- <sup>1</sup> Allow an additional hour fitment time for parking sensor vehicles (SA239 models).
- <sup>2</sup> Required for front camera vehicles (part of the Multi Around Monitor system - standard on GLS Premium).
- <sup>3</sup> Required for GLS & GLS Premium. Note GLX, GLX ADAS & GLX+ round OE fog/DRL lights are refitted into the SpartanBar.
- <sup>4</sup> Bar supplied with 1x SAAMB12 kit. Listed kits are for the option of an additional kit.
- <sup>5</sup> Flip Up Number Plate Kit is recommended for winch bars with standard size number plates.
- <sup>6</sup> Optional recovery point (right hand side only) available for winch kit only.